

# Borderlands Initiative – Regional Collaboration

**Jane Meek**

**Director, Carlisle City Council**



# Borderlands Initiative

- Background
- Work to Date
- Next Steps

# Borderlands Initiative Area

- A population of over 1 million people
- 10% of the UK land mass
- The centre of the UK
  - Linking England, Scotland and Northern Ireland
  - Within 2 hours drive of 14 million people



# Opportunities

- Range of Businesses
- International Companies
- Access to Markets
- Natural Assets
- Economic Corridors

# Borderlands Connectivity Area

## Borderlands Connectivity Area

### LEGEND

#### Settlements

- Large Settlement
- Settlement

#### Airports / Sea Ports

- Airport
- Sea Port

#### Railways

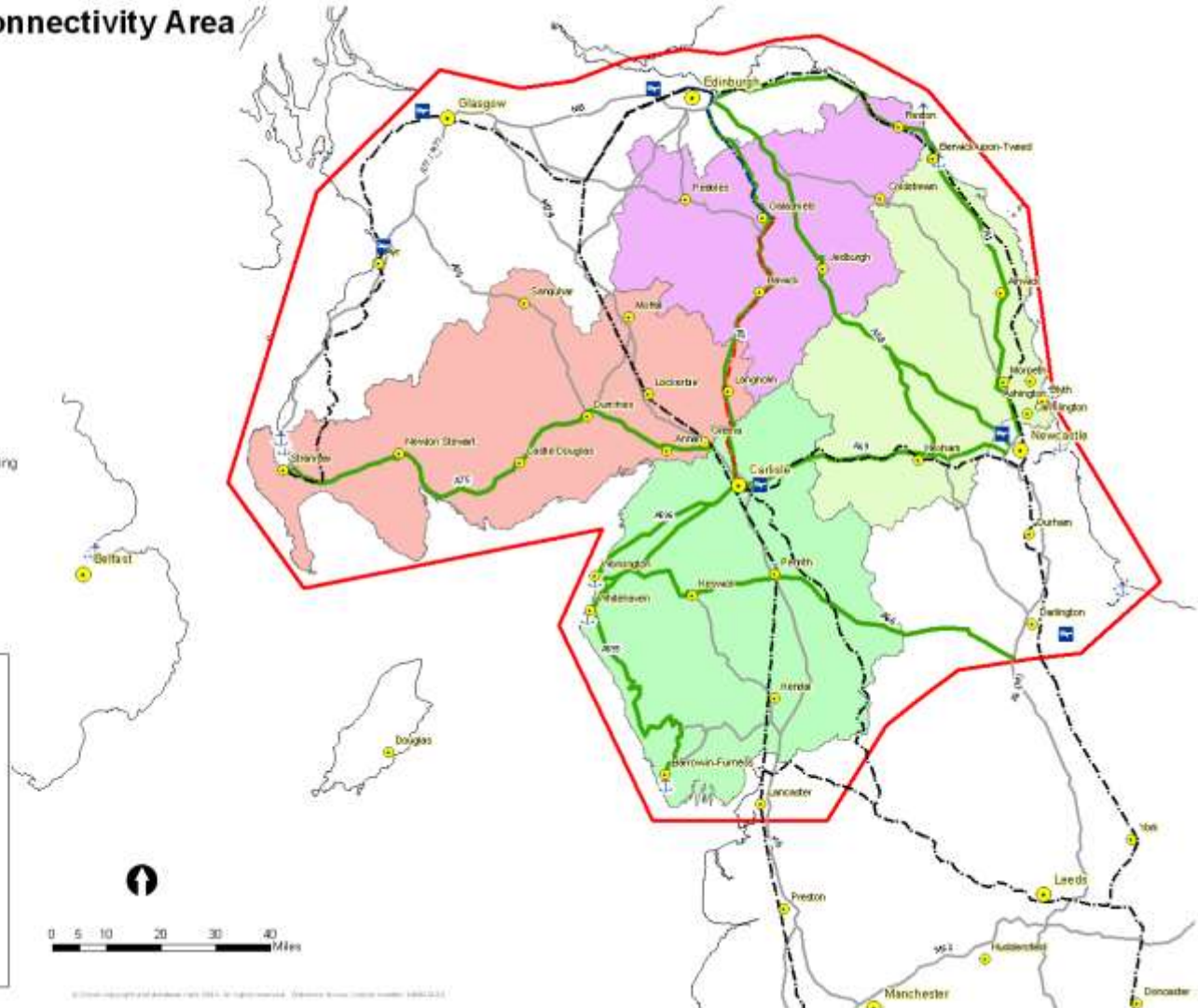
- Active
- Potential
- Under Construction

#### Roads

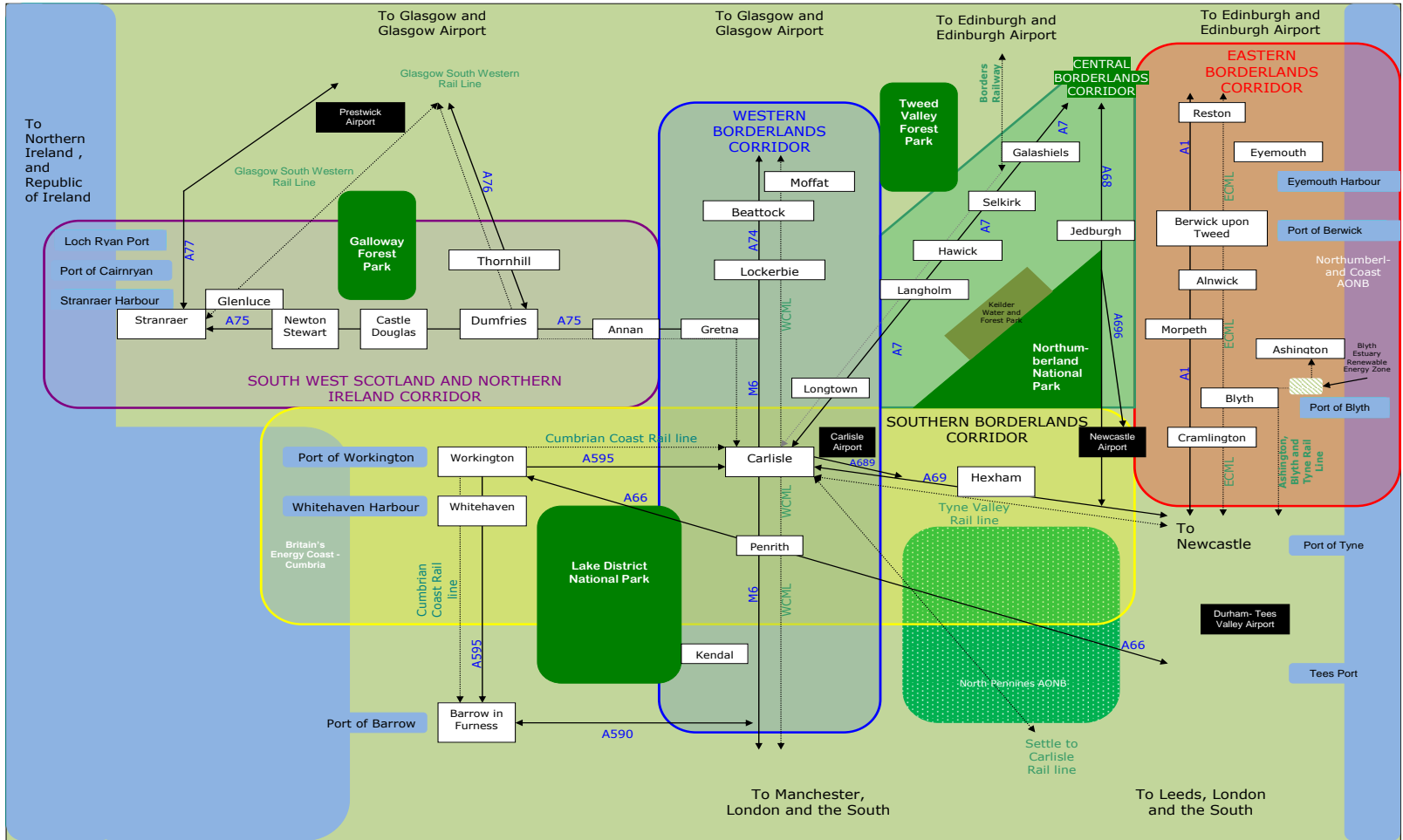
- Other Route
- Potential Priority Route
- Connectivity / Transport Ring

#### Borderlands Areas

- Cumbria
- Dumfries and Galloway
- Northumberland
- Scottish Borders
- UK Boundary



# Economic Corridors



# Borderlands – An Area of Challenges

- Low economic production
  - 68% of UK average GVA per head
- Low wages
  - Weekly Pay 90% of UK average
- Ageing Population
  - Number of 16-64 year olds 2.5% behind UK average
- Rurality
  - 0.47 persons per hectare (UK average 2.6 persons)

# Borderlands Summit – April 2014

- Benefits of working together
- Protocol/Ambition
- Key areas:
  - Economic Corridors
  - Economic Sectors – Forestry, Tourism, Energy
  - Digital Connectivity
  - Education, Skills and Innovation



# Work to Date

- Evidence gathering
- Greater Understanding
- Scope
- Objective/Mechanism
  - Action Plan
  - Collaboration
  - Asks of Government
  - Borderlands “Deal”

# Projects

- Infrastructure Projects
  - Rail
  - Road
  - Sea
  - Business
- Tourism/Rural
- Knowledge, Innovation and Skills

# Economic Corridor – Investment Potential

- Examples of Potential Economic Benefits:
  - A1 dualling
    - £376.8 million uplift in GVA
    - 42% uplift in jobs in Berwick, Alnwick and Morpeth
- Edinburgh to Berwick rail services
  - £19.2 million benefit per year
  - Increased social inclusion
- Carlisle Airport
  - Contribute £10.7 million to GVA a year
  - Safeguard 60 FTE's and create 156 FTE's
  - 68,475 passengers by year 5

# Next Steps

- Prioritised Projects
- Economic Assessment

# Conclusion